



Authoritarianism: Patterns of Politics

Glenda Eoyang, PhD
geoyang@hdsinstitute.org

Royce Holladay, Med
rholladay@hdsinstitute.org

Nothing is intractable.



Today we will . . .

- ▶ What?
See the self-organizing dynamics of politics
- ▶ So what?
Explore options for action at any scale
- ▶ Now what?
Identify ways to continue Adaptive Action

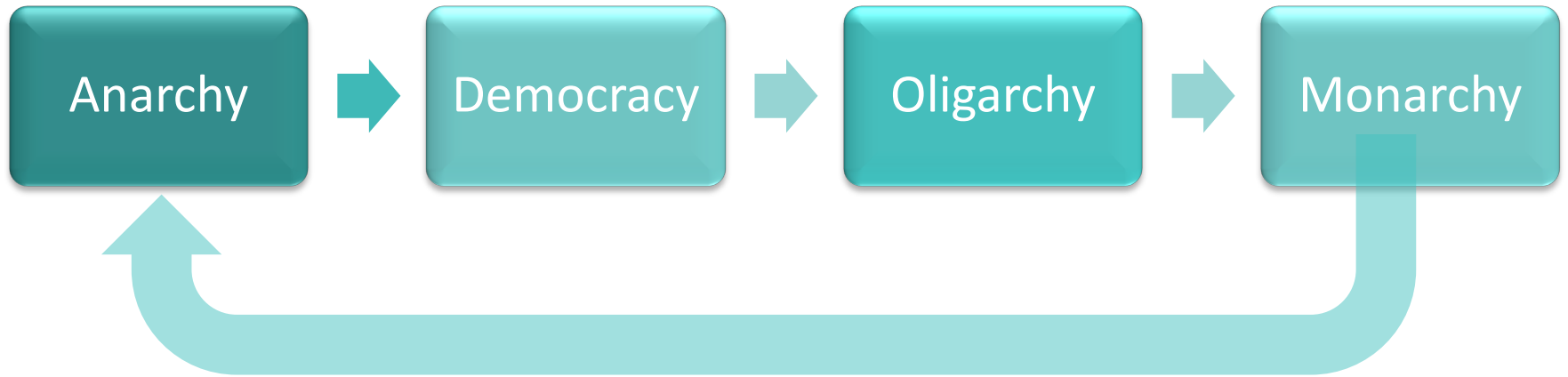


See the self-organizing dynamics of politics



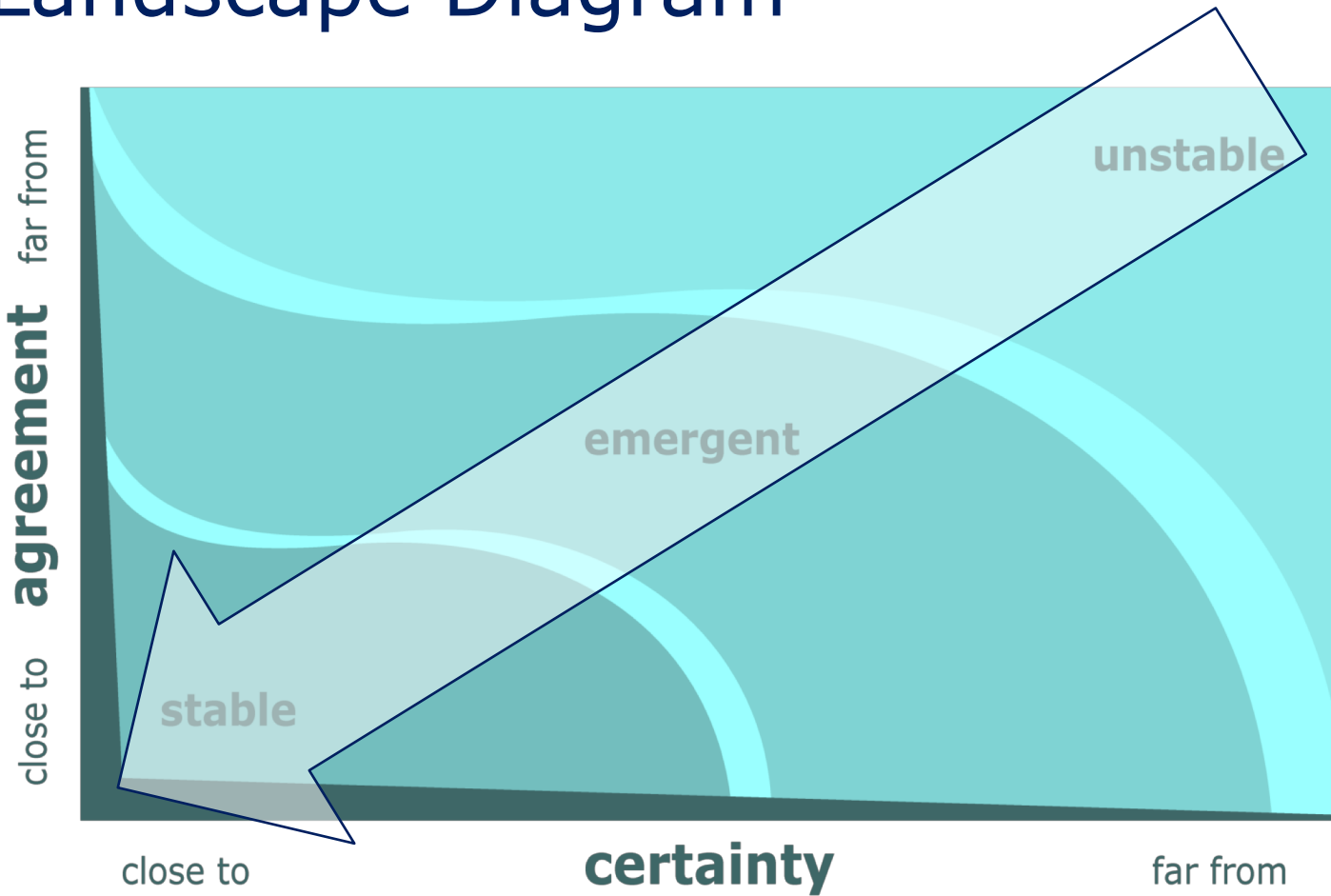
T'was ever thus . . .

Plato and Politics





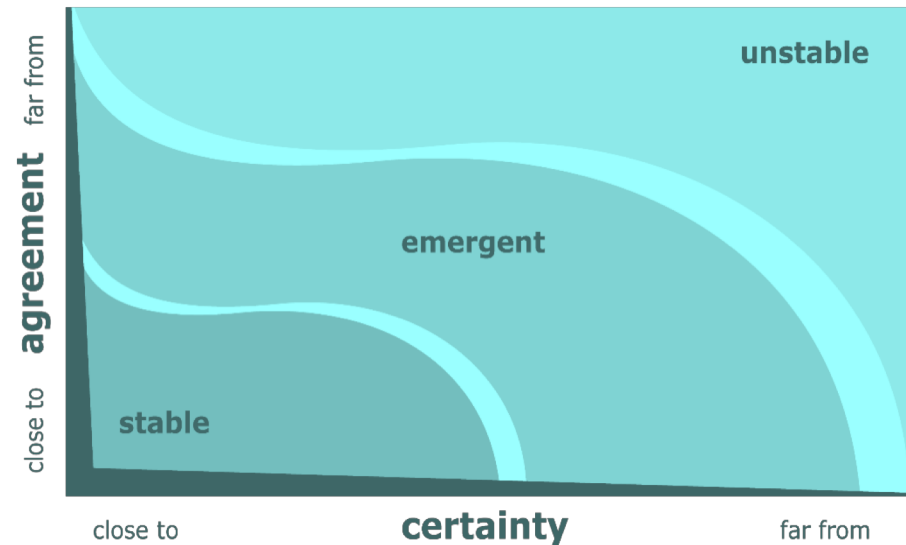
Landscape Diagram





What's so great about STABLE?

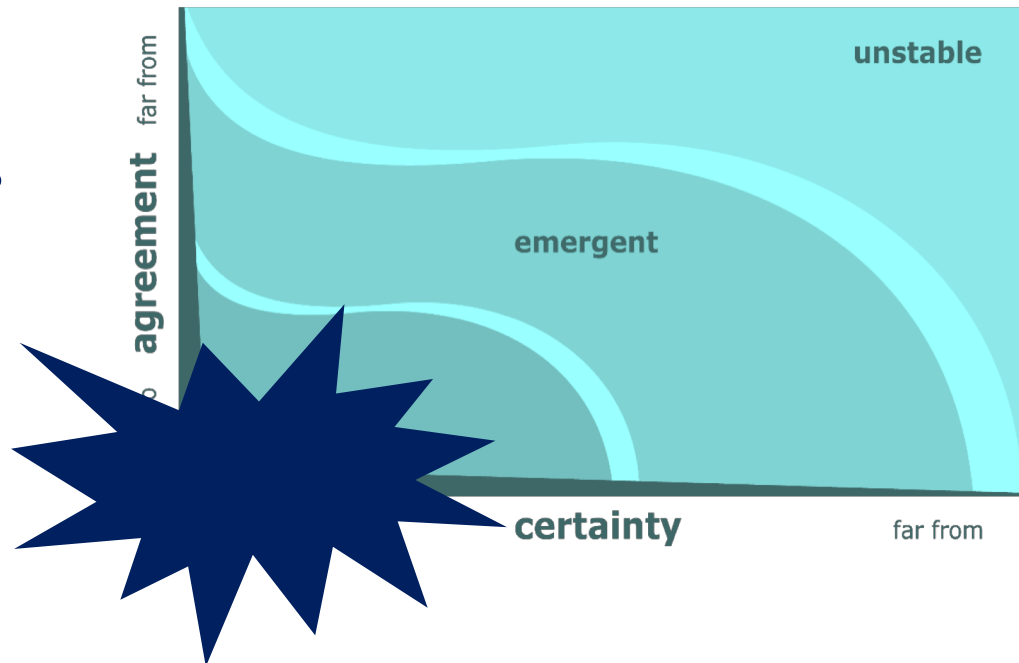
- ▶ Safe
- ▶ Reliable
- ▶ Constant
- ▶ Habitual
- ▶ Low risk
- ▶ Protected
- ▶ Under control
- ▶ Low energy requirement
- ▶ No need to choose
- ▶ Practice makes perfect
- ▶ Expertise and accountability win the day!





So what's the problem?

- ▶ Constrained
- ▶ Dependent
- ▶ Homogeneous
- ▶ Boring
- ▶ Obsolete
- ▶ Stifling
- ▶ Constrained
- ▶ Restricted
- ▶ No choices
- ▶ Dependency
- ▶ Victimhood and blaming win the day!

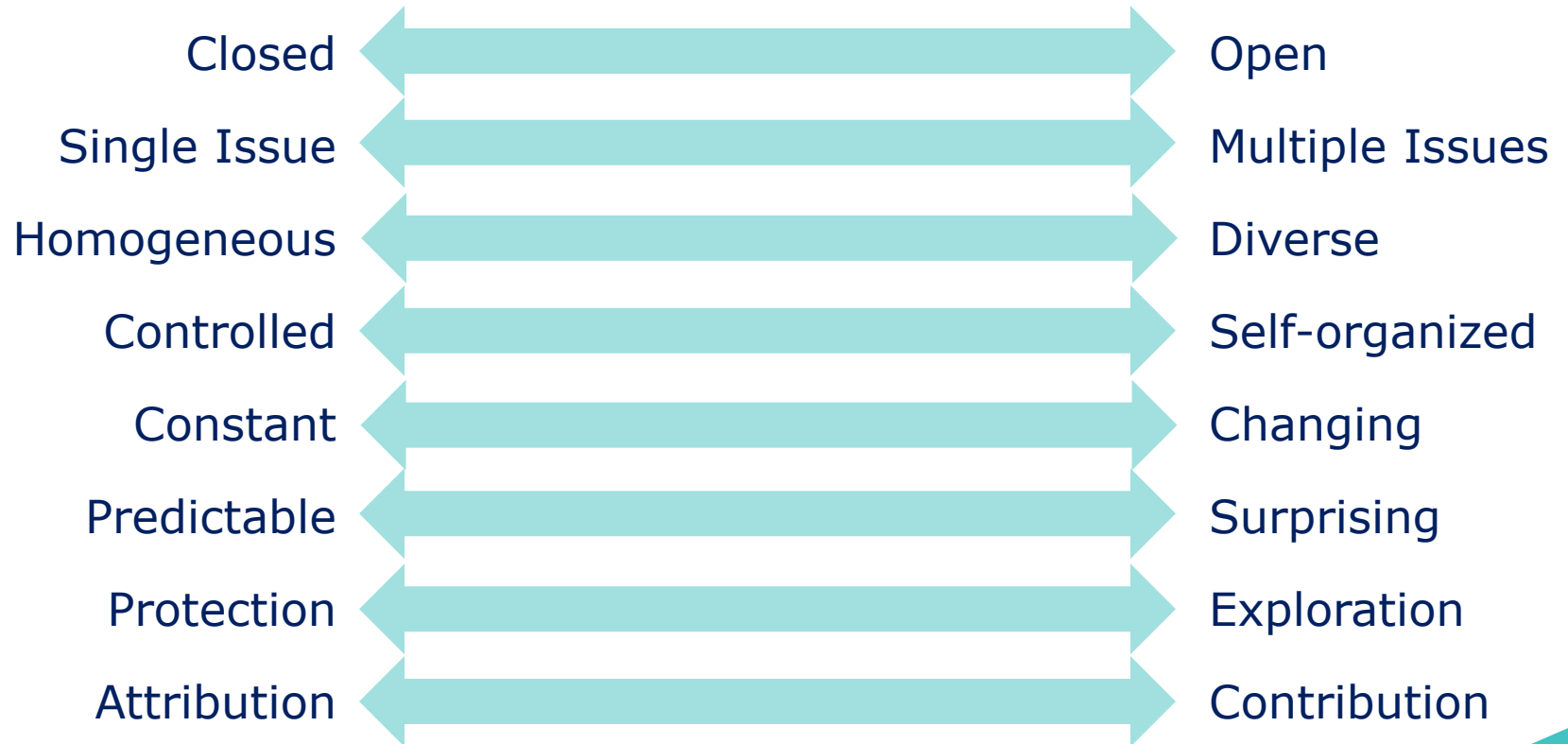




Explore options for action at any scale

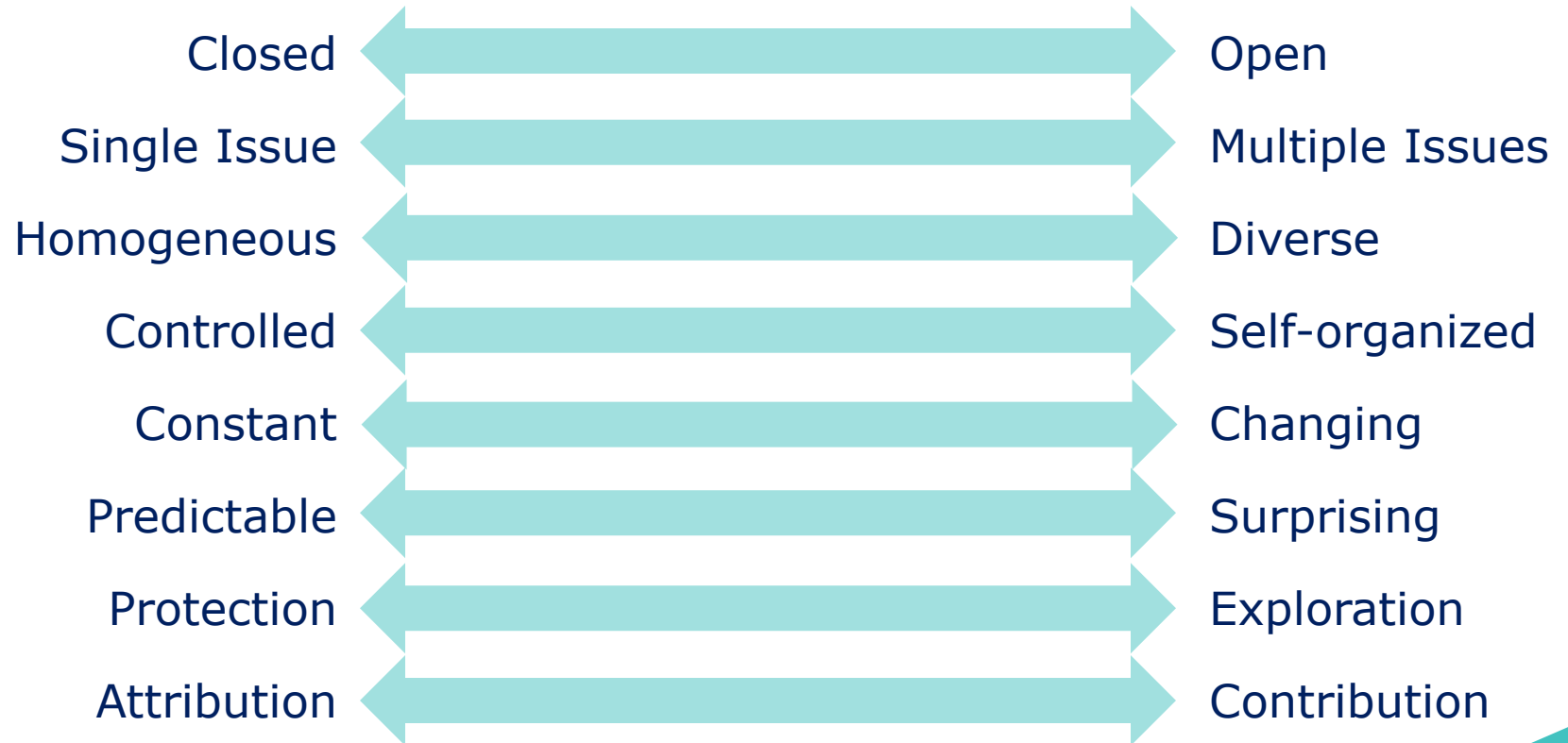


So what are your options?





What about you as a person?



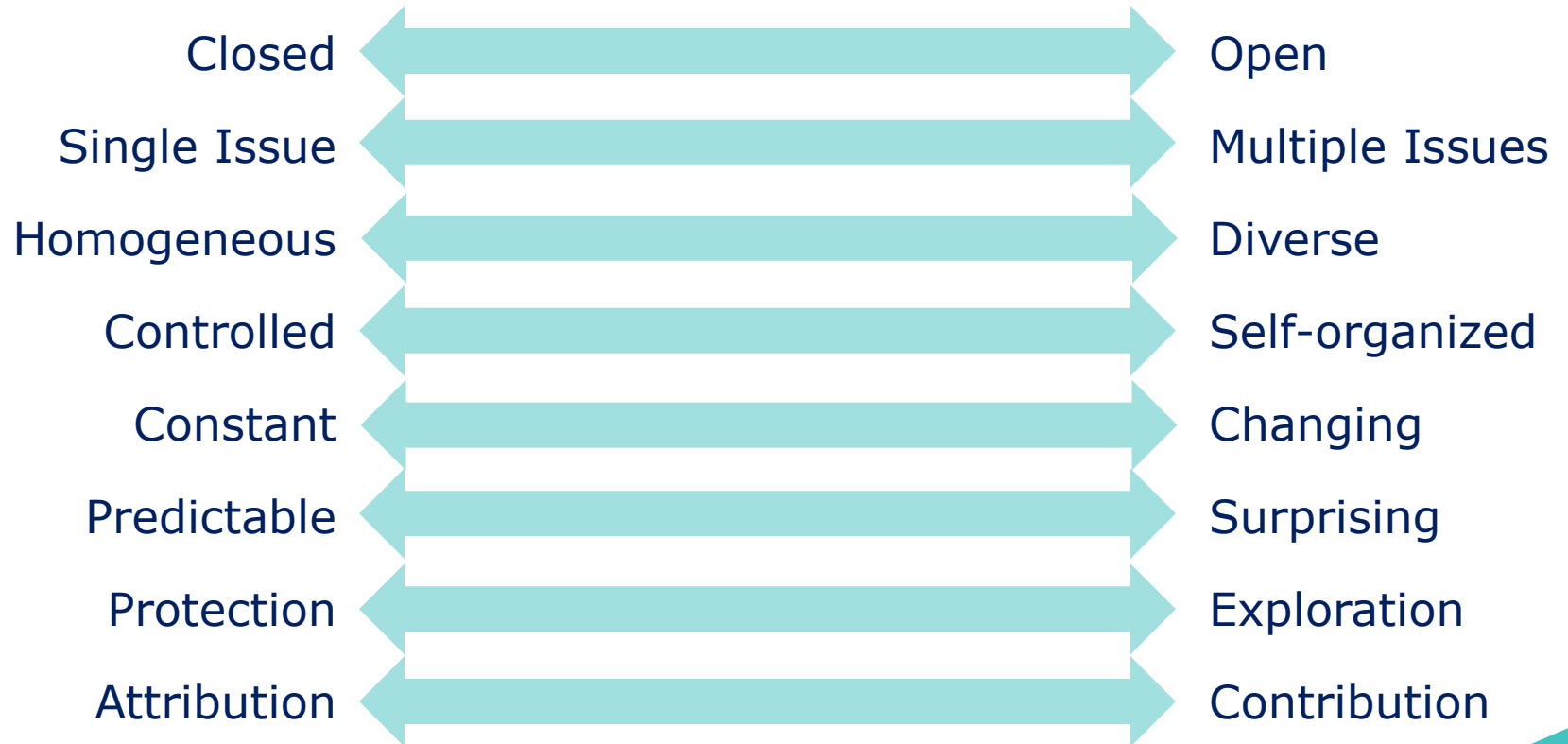


What about your family?



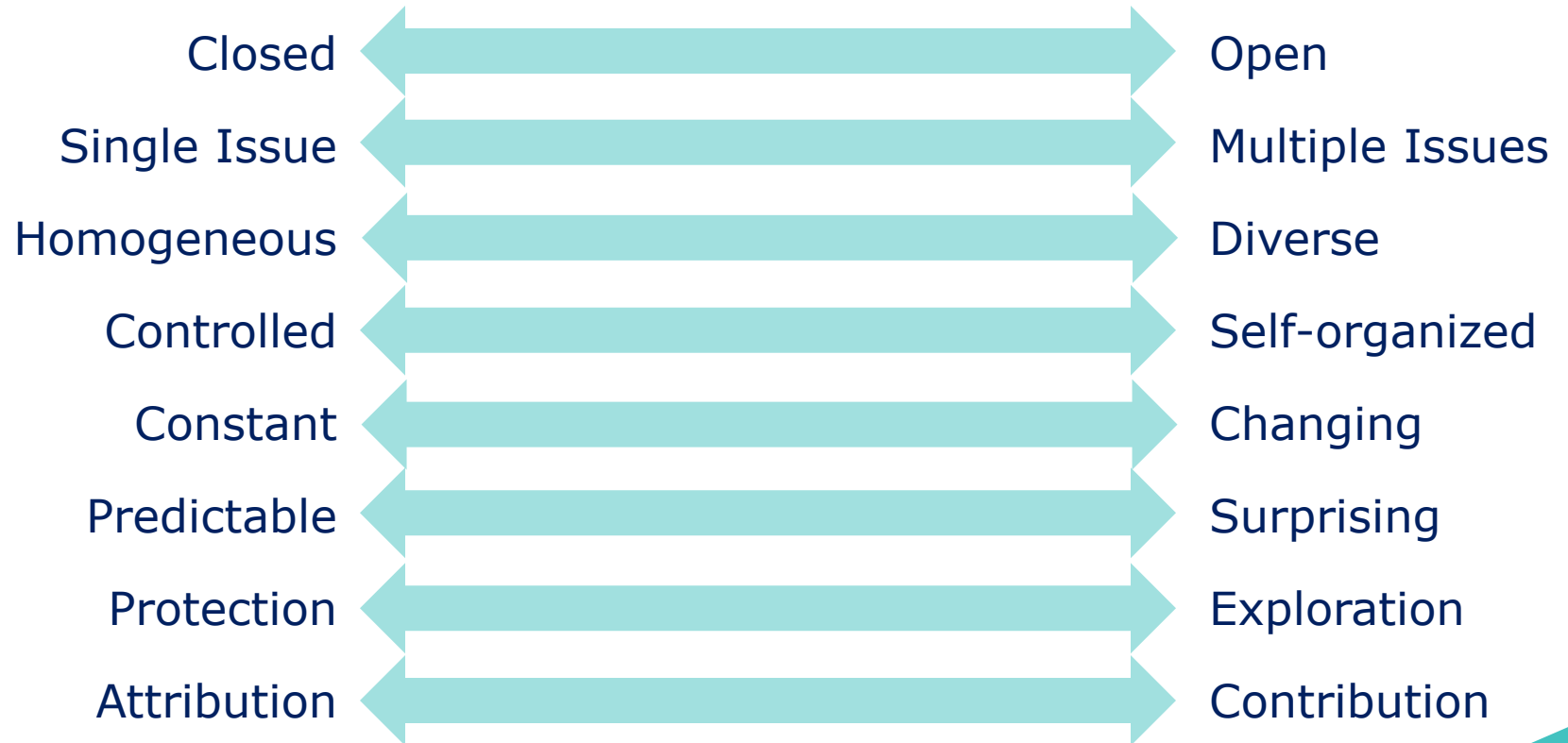


What about your community?





What about your politics?





Identify ways to continue Adaptive Action



Ask and Adjust: Stay Awake!

- ▶ Where are you now?
What are the risks and benefits?
- ▶ Where do you want to be?
What might be unintended consequences?
- ▶ How will you shift to move toward a more useful place?



Join us for upcoming webinars:

Lead from Anywhere

Adaptive Action Lab

Jen Jones-Patulli, Toine van der Doelen, Royce Holladay

Feb 19, 20, 22
12 to 2 CST

New Paradigms

Free Live Virtual Workshop

Glenda Eoyang, Royce Holladay

Mar 7
11 to 12 CST

Other Learning Opportunities at
www.HSDInstitute.org



Thank you!