



Your Unfolding Future: *Plan in Uncertainty*

Nothing is intractable.

Live Virtual Workshop

November 2016

Glenda Eoyang geoyang@hdsinstitute.org



Today we will explore . . .

- ▶ **What** conditions shape your unfolding future?
- ▶ **So what** assumptions can work for YOU in uncertainty?
- ▶ **Now what** will be your plan for your future?



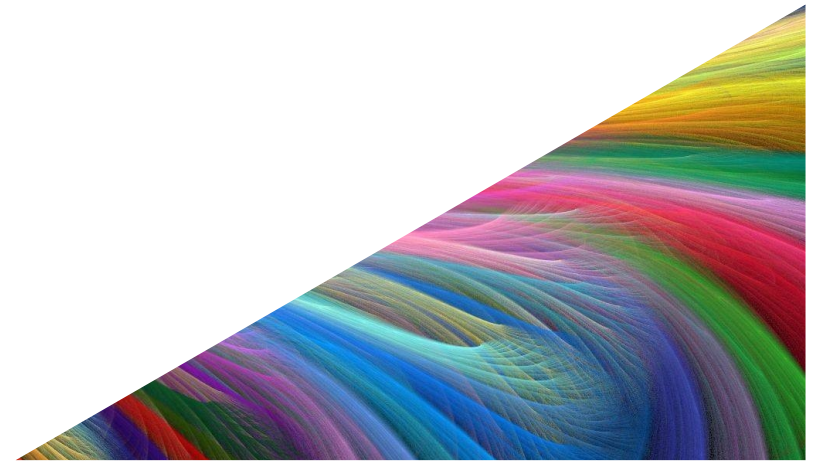


HUMAN SYSTEMS
DYNAMICS INSTITUTE

**What conditions shape your
unfolding future?**

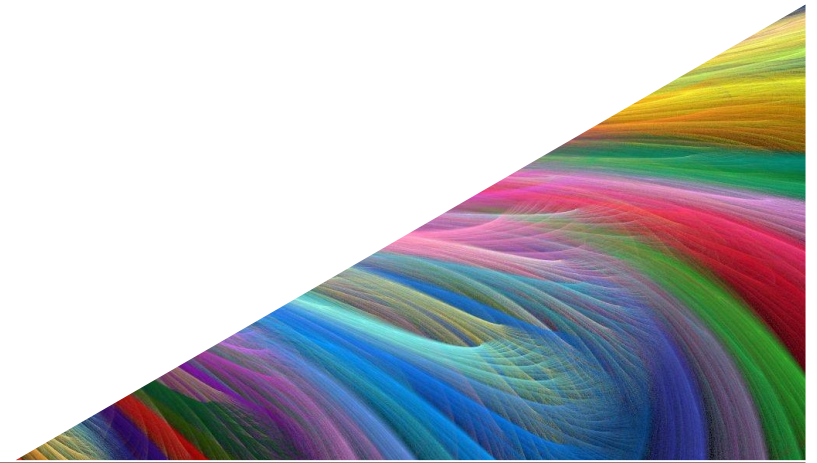


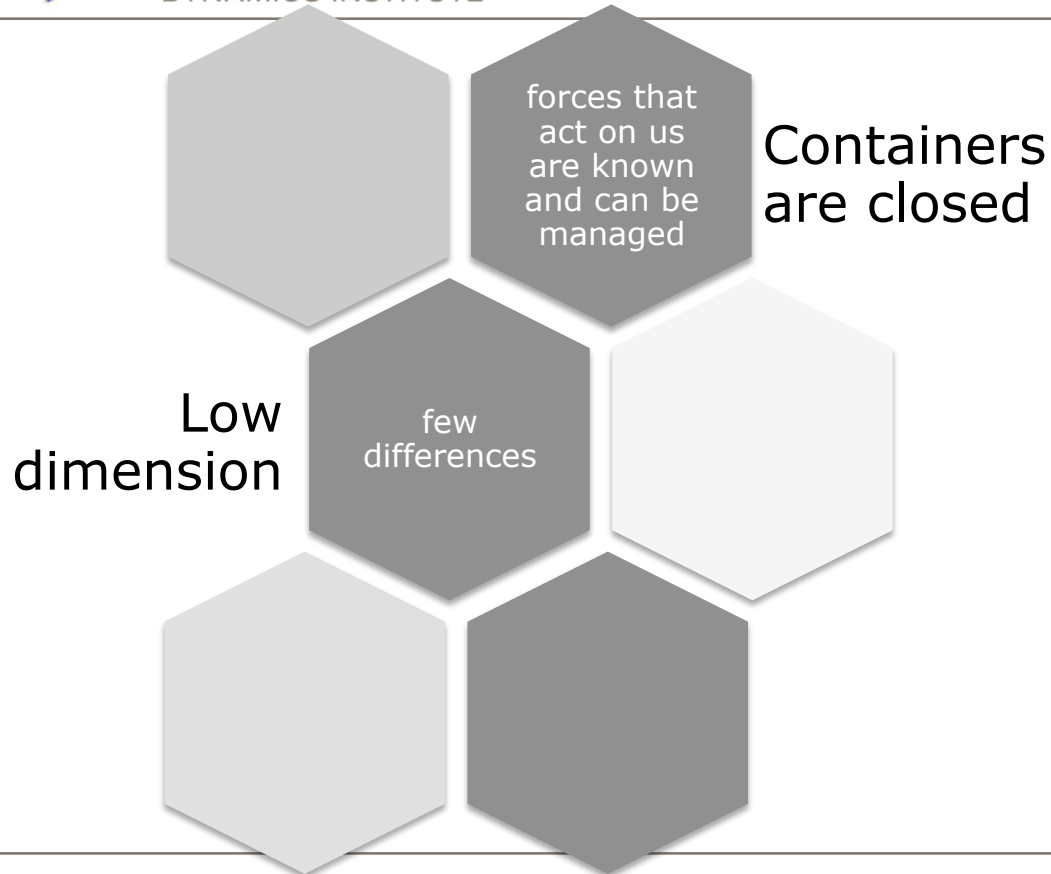
Traditional Planning



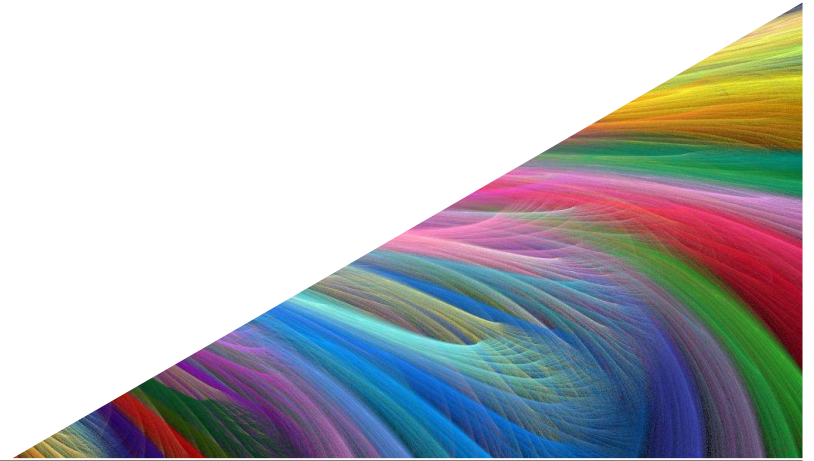


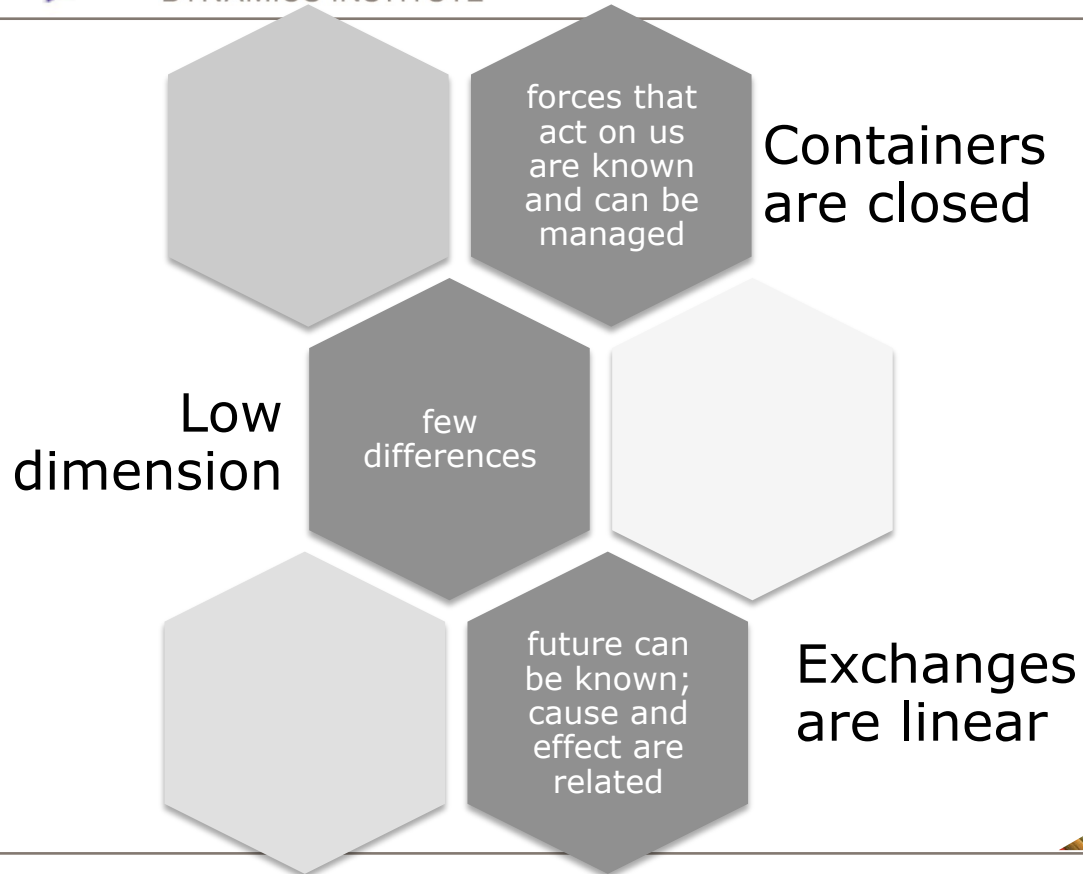
Traditional Planning



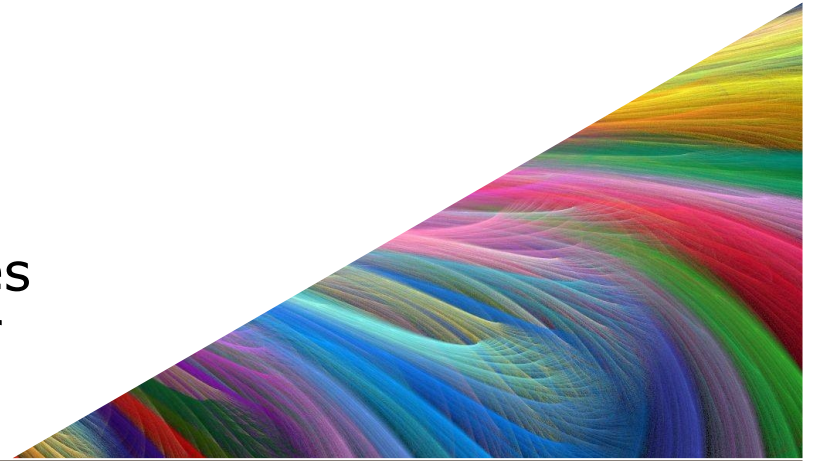


Traditional Planning





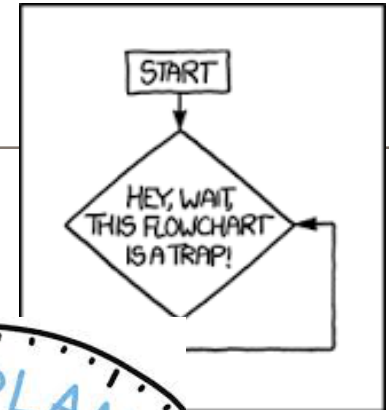
Traditional Planning





That world is

- ▶ Predictable
- ▶ Controllable
- ▶ Dynamic
- ▶ Black and white





Planning Assumptions

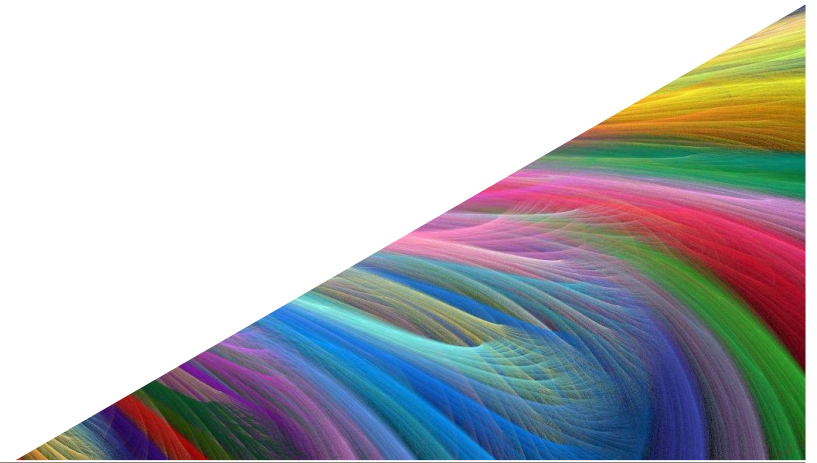
In closed, low dimension, linear systems:

- ▶ Clear goals
- ▶ Aligned resources
- ▶ Great communication
- ▶ Frequent monitoring



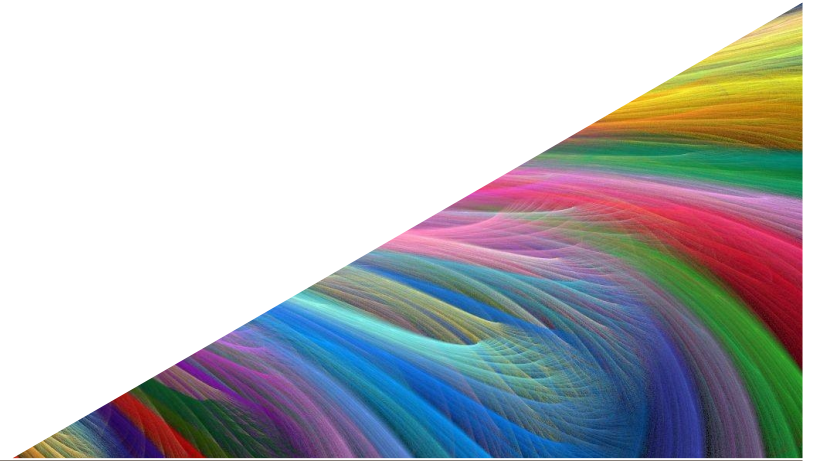


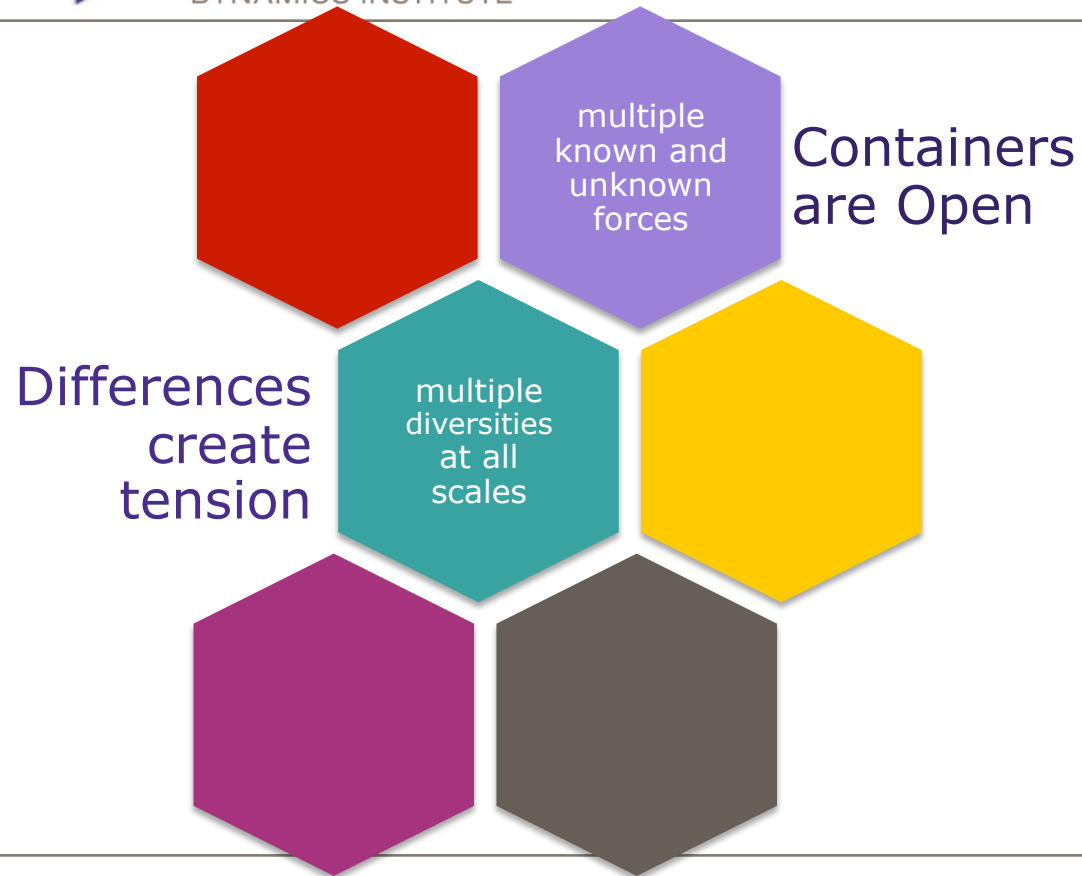
Adaptive Planning



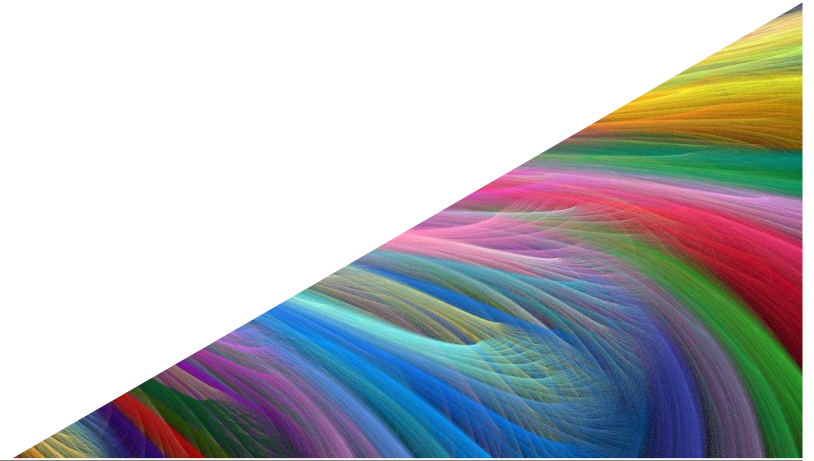


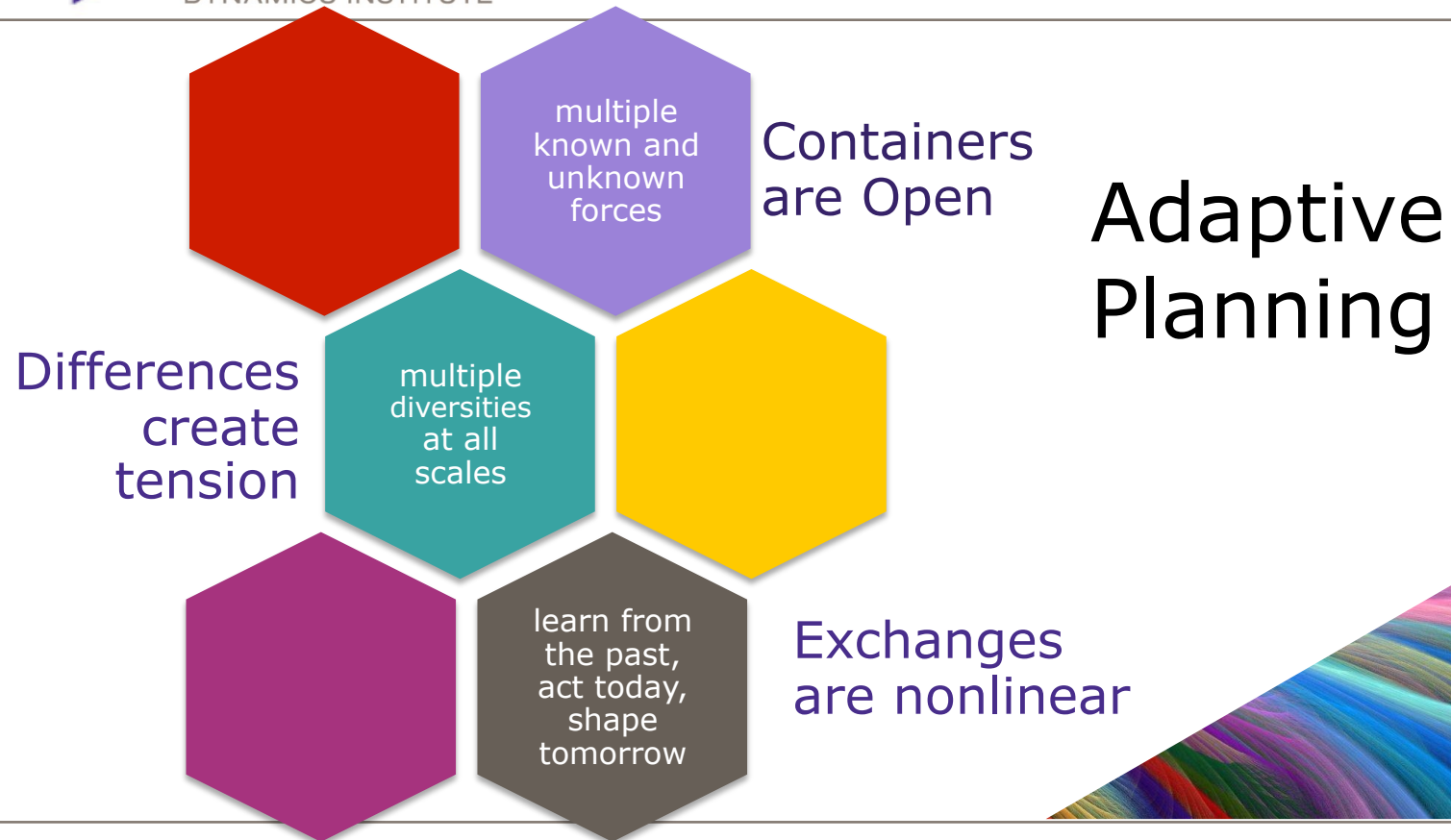
Adaptive Planning





Adaptive Planning







That world is

- ▶ Unknowable
- ▶ Uncontrollable
- ▶ Dynamical
- ▶ Surprising
- ▶ Uncertain





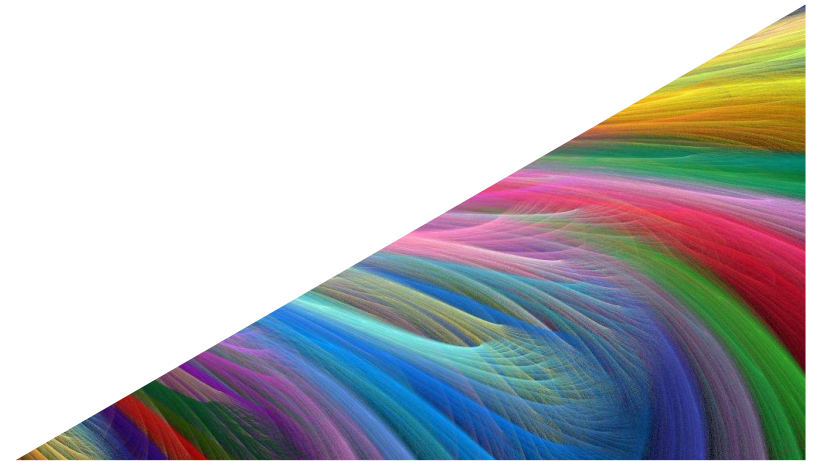
HUMAN SYSTEMS
DYNAMICS INSTITUTE

**So what assumptions can work for
YOU in uncertainty?**



Assumption #1 About an Uncertain World

- ▶ Precision does not always help





If precision is not accuracy, . . . Now what?

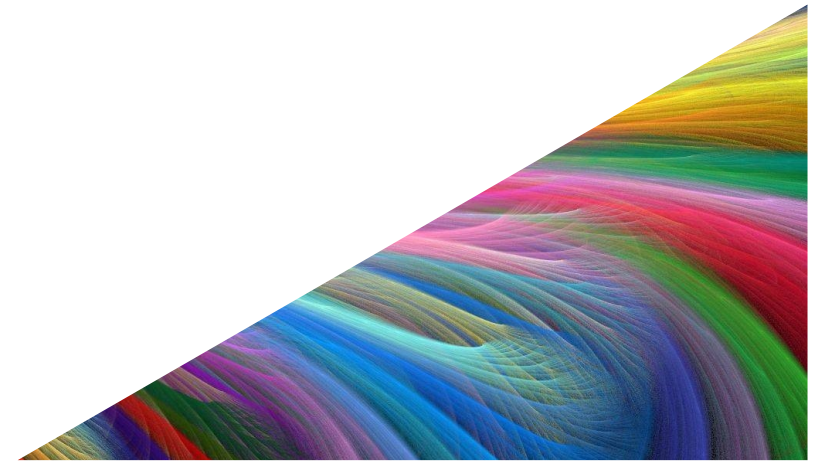
- ▶ Look for patterns not points
- ▶ Think across scales
- ▶ Zoom in and zoom out
- ▶ Find fit for function
- ▶ Excellent enough
- ▶ And . . .





Assumption #2 About an Uncertain World

- ▶ There is no root cause – cause is a network





If cause is a network, . . . Now what?

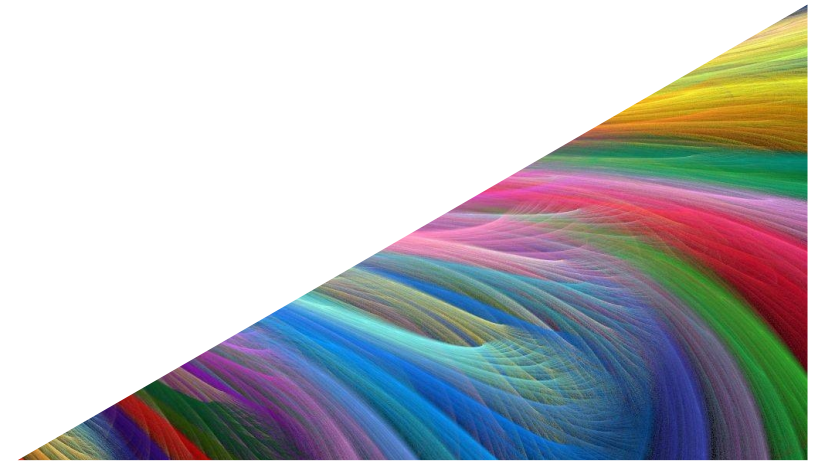
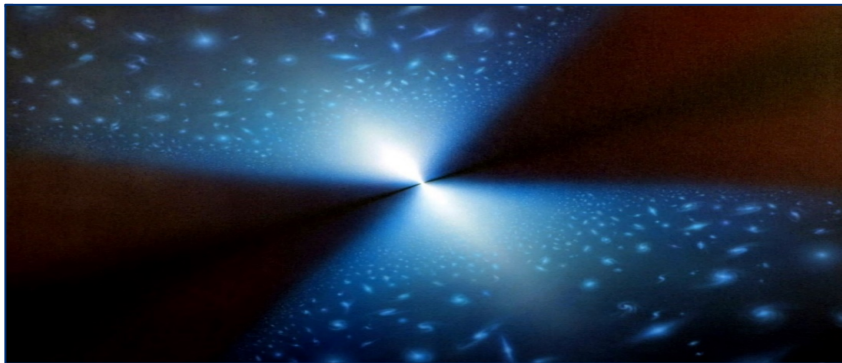
- ▶ Think in networks
- ▶ Scan multiple horizons
- ▶ Make and break connections
- ▶ Expect unintended consequences
- ▶ Use Adaptive Action
What? So what? Now what?
- ▶ And . . .





Assumption #3 About an Uncertain World

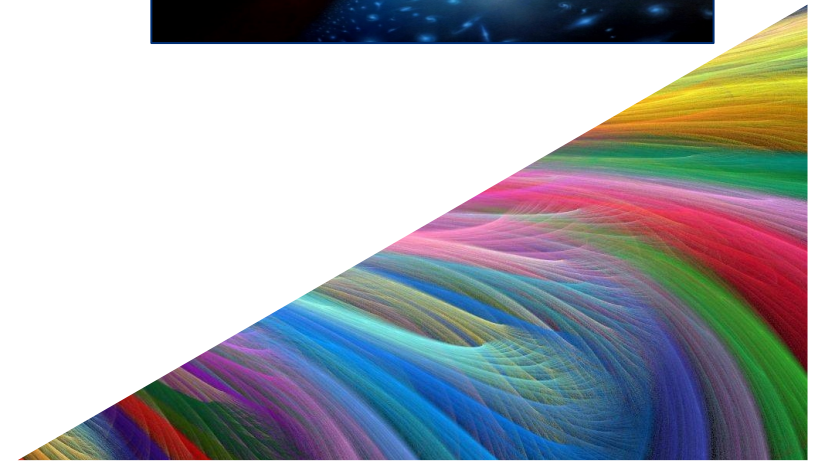
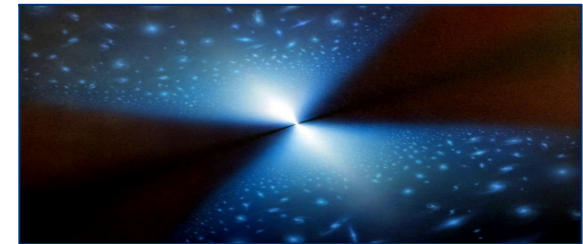
- ▶ This moment is all we have





If time is all we have. . . Now what?

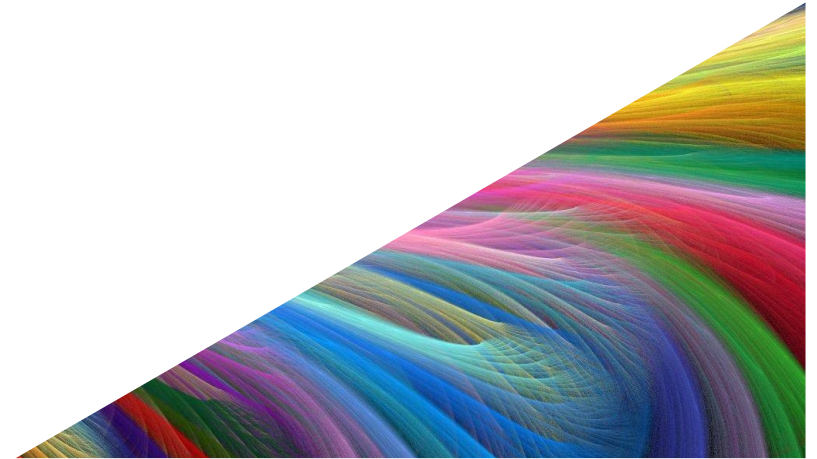
- ▶ Explore alternative futures
- ▶ Know history, but . . .
- ▶ Know it doesn't predict future
- ▶ Stay conscious
- ▶ Choose
- ▶ Practice mindfulness
- ▶ And . . .





Assumption #4 About an Uncertain World

- ▶ Difference is generative





If difference is generative, . . .

Now what?

- ▶ Consider interdependent pairs
- ▶ Work across dimensions
- ▶ Iterate, iterate, iterate
- ▶ Local rules, global patterns
- ▶ Distinguish stable from not
- ▶ And . . .





Assumption #5 About an Uncertain World

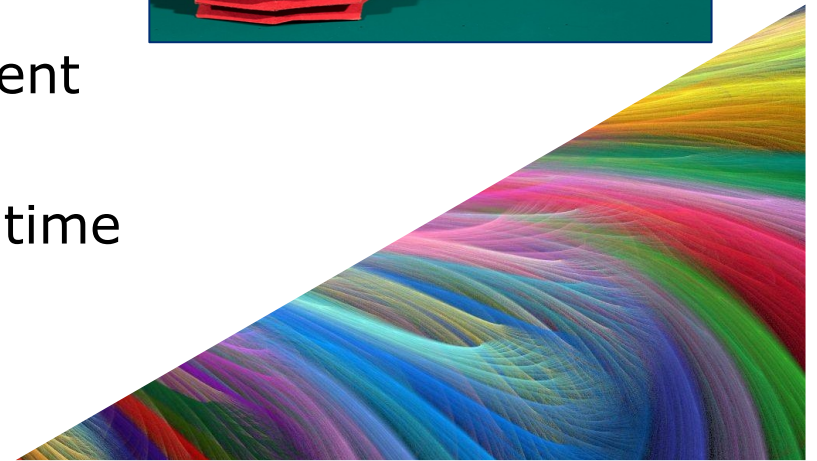
- ▶ Experience stretches and folds





If experience stretches and folds, . . . Now what?

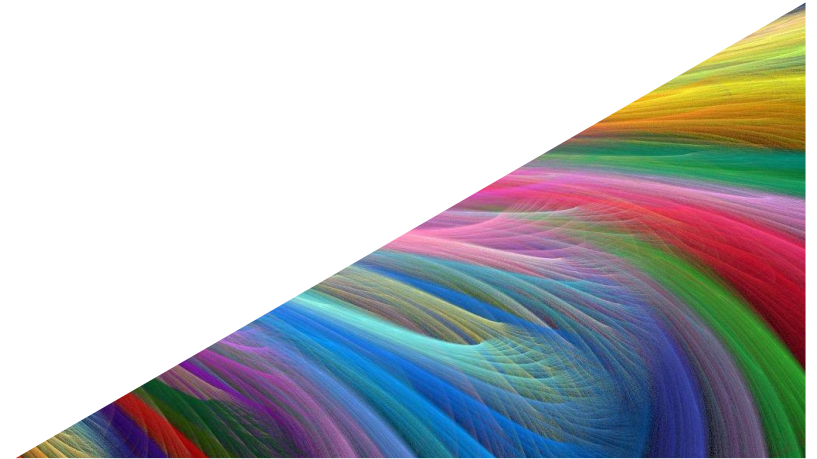
- ▶ Watch the tension
- ▶ Expect and appreciate contraction
- ▶ Take no difference as permanent
- ▶ Test your assumptions
- ▶ Don't get stuck on space and time
- ▶ And . . .





Assumption #6 About an Uncertain World

- ▶ Patterns are not problems





If we see patterns not problems, . . . Now what?

- ▶ Stay in inquiry
- ▶ Integrate theory and practice
- ▶ Don't stay stuck
- ▶ Work at multiple scales
- ▶ And . . .





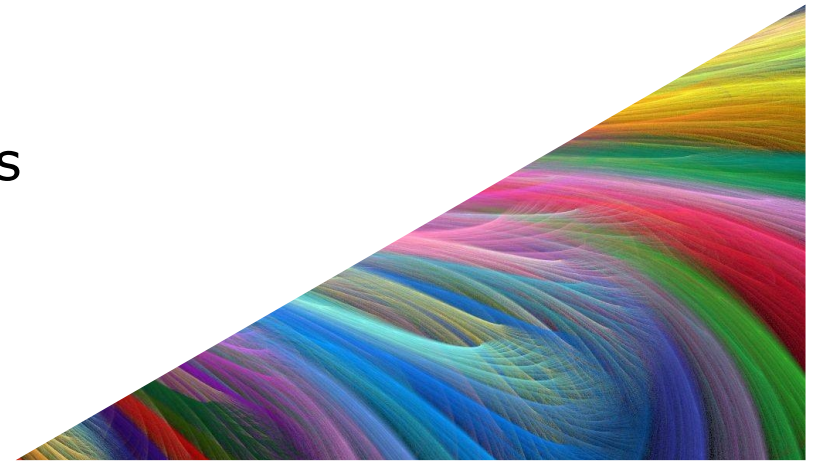
HUMAN SYSTEMS
DYNAMICS INSTITUTE

**Now what will be your plan for
your future?**



Assumptions About an Uncertain World

- ▶ Precision does not always help
- ▶ There is no root cause – cause is a network
- ▶ This moment is all we have
- ▶ Difference is generative
- ▶ Experience stretches and folds
- ▶ Patterns are not problems





Adaptive Planning





Learn more . . .

- ▶ Online at HSDinstitute.org
- ▶ Adaptive Action Labs:
 - ❑ HSD Professional Certification— Toronto, Jan 2017
 - ❑ Leadership in Medical Education—Online, Feb 2017
 - ❑ Coaching—Online
 - ❑ Health and Wellness—Ottawa, Dec 2016





Join us for upcoming webinars

December 1 st , 11 am CST (60 min) Live Virtual Workshop	<i>Personal Power to Design the Life You Want: Your Radical Inquiry</i>
December 15 th , 11 am CST (90 min) Quarterly Associates Meeting	<i>Hear from several HSD Associates sharing their current HSD praxis</i>

