



One Answer Is No Answer: Teaching as Learning

Nothing is intractable.

Live Virtual Workshop

June 2016

Glenda Eoyang geoyang@hsdinstitute.org



Today we will explore . . .

- ▶ **What** is deep learning?
- ▶ **So what** questions set conditions for a deep learning ecology?
- ▶ **Now what** are implications for teaching and learning?



WHAT is deep learning?



Not All Learning is Deep Learning

Learning	Deep Learning



Not All Learning is Deep Learning





Not All Learning is Deep Learning

Learning		Deep Learning
Predictable	↔	Surprising
Replication	↔	Innovation



Not All Learning is Deep Learning

Learning		Deep Learning
Predictable	↔	Surprising
Replication	↔	Innovation
Memory	↔	Imagination



Not All Learning is Deep Learning

Learning		Deep Learning
Predictable	↔	Surprising
Replication	↔	Innovation
Memory	↔	Imagination
Outcomes-based	↔	Capacity-based



Not All Learning is Deep Learning

Learning		Deep Learning
Predictable	↔	Surprising
Replication	↔	Innovation
Memory	↔	Imagination
Outcomes-based	↔	Capacity-based
Specific	↔	General



Not All Learning is Deep Learning

Learning		Deep Learning
Predictable	↔	Surprising
Replication	↔	Innovation
Memory	↔	Imagination
Outcomes-based	↔	Capacity-based
Specific	↔	General
Consistent	↔	Coherent



Not All Learning is Deep Learning

Learning		Deep Learning
Predictable	↔	Surprising
Replication	↔	Innovation
Memory	↔	Imagination
Outcomes-based	↔	Capacity-based
Specific	↔	General
Consistent	↔	Coherent
Communal	↔	Personal



Deep Learning Does Not Give . . .

- ▶ The “right” answer
- ▶ Predictable timeframes
- ▶ Reliable outcomes
- ▶ Consistent results
- ▶ Expert power
- ▶ Certainty



Deep Learning Helps You . . .

- ▶ Thrive in uncertainty
- ▶ Find the fix that fits
- ▶ Engage with others
- ▶ Practice Praxis
- ▶ Improvise
- ▶ Ask the next transforming question
- ▶ And . . .



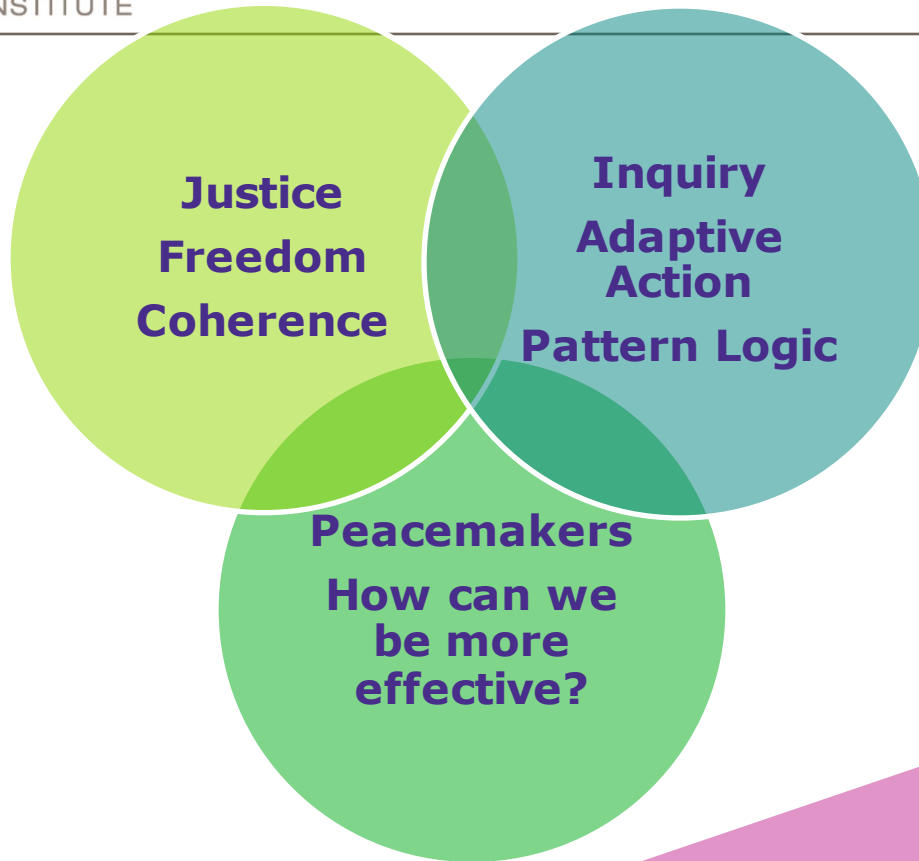
What Does Deep Learning Look Like?

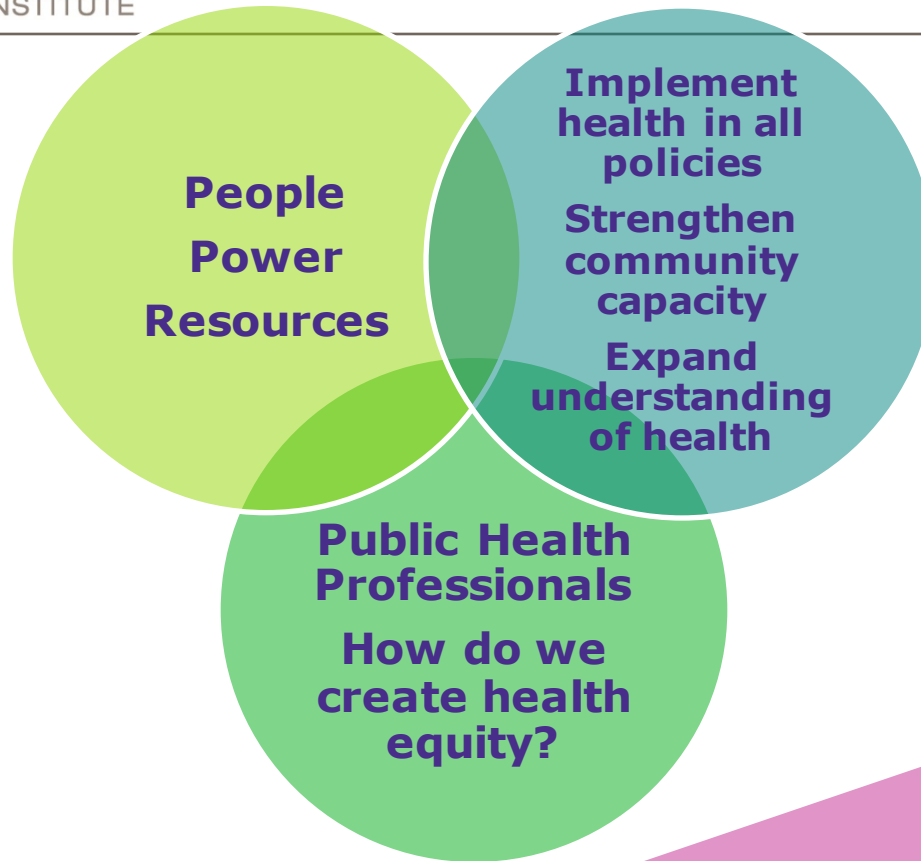
- ▶ One mole of CaCl
- ▶ W-A-T-E-R
- ▶ Cartwheels
- ▶ Try it, it works!
- ▶ Do you mean . . . ?
- ▶ Doesn't every question include a bit of advice?
- ▶ And

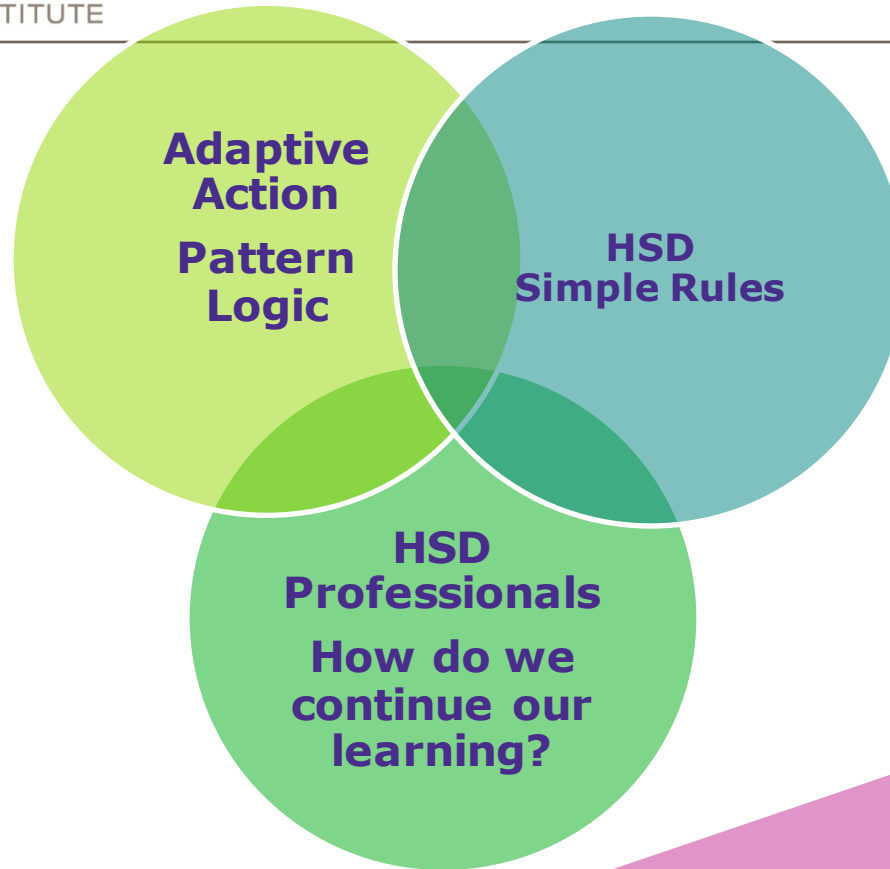


SO WHAT sets conditions for a deep learning ecology?











NOW WHAT are the implications for teaching and learning?



Teaching IS Learning Learning IS Teaching

- ▶ Inquiry is the key
- ▶ Failure is required
- ▶ Innovation is necessary
- ▶ Choice is deliberate
- ▶ Partnership is mutual
- ▶ And . . .



Today we explored . . .

- ▶ **What** is deep learning?
- ▶ **So what** questions set conditions for a deep learning ecology?
- ▶ **Now what** are implications for teaching and learning?



Learn more . . .

- ▶ Webinars:
 - ▷ Education
 - ▷ Live Virtual Workshops
- ▶ Online:
 - ▷ Adaptiveaction.org
 - ▷ HSDinstitute.org
 - ▷ Wiki.hsdinstitute.org
- ▶ Adaptive Action Labs:
 - ▷ HSD Professional Certification—July in Las Vegas
 - ▷ Leadership in Health Professions Education—September online



Join us for upcoming webinars

May 12th, 11 am CST Live Virtual Workshop	<i>Courage to Create: Build Adaptive Capacity for Continuous Innovation</i>
Jun 2nd, 11 am CST Live Virtual Workshop	<i>One Answer is No Answer: Teaching as Learning</i>
Jun 16 th , 11 CST Quarterly Associates Meeting	